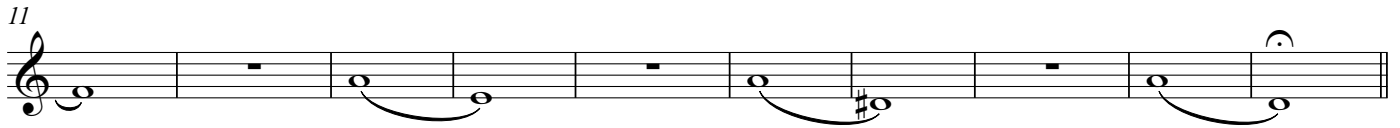
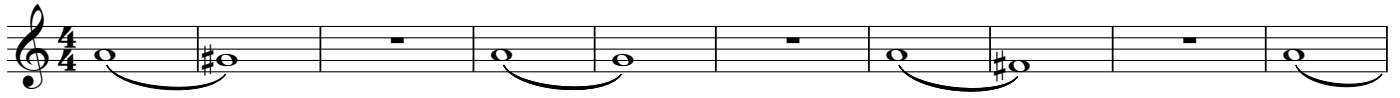
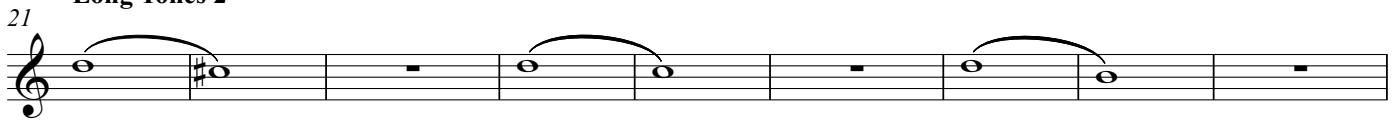


Symphonic Warm-ups

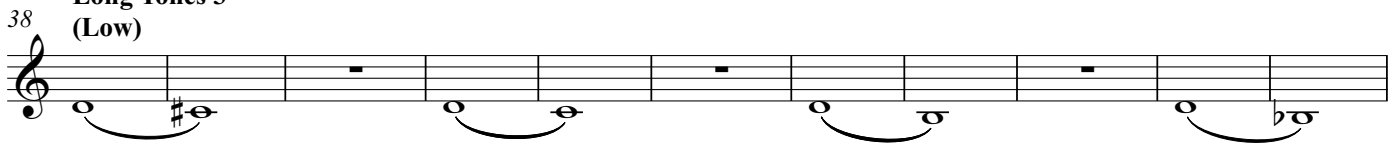
Long Tones 1 ♩ = 100



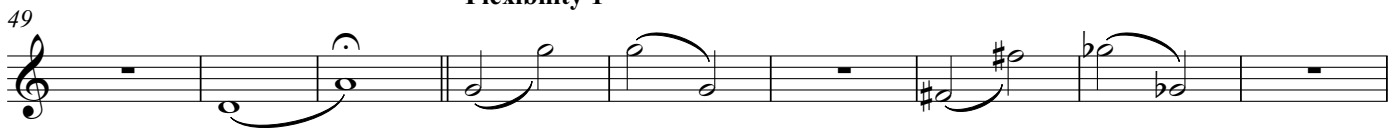
Long Tones 2



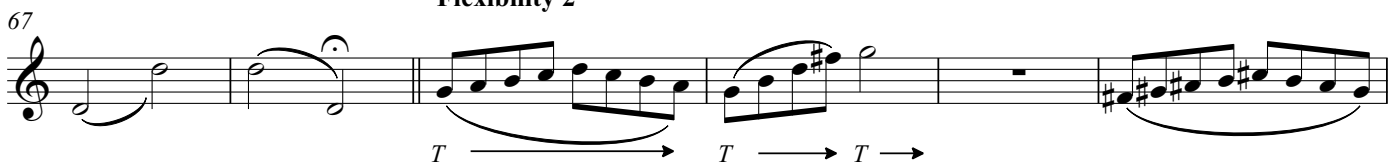
Long Tones 3 (Low)



Flexibility 1



Flexibility 2



Alto Saxophone
Flexibility 3

78

83

89

93

96

Articulation 1 (on scale)

Articulation 2 (on scale)

100

Articulation 3

105

Art. Exercise

112

Chorale 1 ♩ = 72

121

Chorale 2

129

Chorale 3

136