

### Suggested Timeline

#### OCTOBER:

Determine if you want to participate, what type of event(s) you want to perform, and with whom. If you choose to perform in an ensemble, make sure all individuals are responsible and willing to work as hard as necessary.

#### OCTOBER/ NOVEMBER:

Fill out registration form online and turn in your printed registration to Mr. Rais in a sealed envelope with all registration fees on or before October 25. Mr. Rais will register you.

#### OCTOBER-DECEMBER:

Read through several pieces and determine the music you will perform. Private instructors are a good resource for suggesting music. If this is not possible, see Mr. Rais for recommendations.

#### DECEMBER:

Bring selected music to Mr. Rais for approval. Remember that there must be a published score, containing all parts lined up, for the judge and that all parts of the ensemble must be covered and not doubled.

Practice your individual part to learn the notes and rhythms before attempting to rehearse with the entire ensemble or with your accompanist. PRACTICE, PRACTICE, PRACTICE!

#### DECEMBER-FEBRUARY:

Begin rehearsing with your ensemble members or accompanist. This is the time to work on musicality and ensemble playing. If you come to these rehearsals unprepared technically, you will be wasting your accompanist and/or your ensemble member's time.

#### FEBRUARY (S&E week):

Performance for class! Bring the judges copy of your music and your personal copy for class performance. This is your last chance to double check that you have followed all the rules and regulations!

#### SATURDAY, FEBRUARY, 2020:

Solo and Ensemble Day!

Daphne Mitchell	(734) 718-8623
Jenny McCormick	(734) 261-4229
Jill Coffey	(734) 266-3132
Marilyn Saluka	(734) 464-7382
Karen Danke	kdanke@livoniapublicschools.org

# FROST MIDDLE SCHOOL MUSIC

Michael Rais, Director of Orchestra and Bands

mrais@livoniapublicschools.org

(734) 744-2670

## Solo and Ensemble

Saturday, February 8, 2020

### Description

Every winter students have the opportunity to perform as a soloist and/or as a part of an ensemble at Solo and Ensemble Festival. The festival is held at Franklin High School in Livonia. At this event, students perform a solo, an ensemble, or both in front of a judge. Students receive a rating of I-V on their performance (I being Superior). Those students that receive a rating of I or II earn a medal. Students usually find the experience to be quite rewarding, even though it may be a little intimidating the first time. I highly encourage all students to participate in this festival.

### Registration

Students interested in participating in Solo and Ensemble must register to attend the competition. Registration forms can be found in the music room starting in early October.

#### **Registration Deadline: Friday, October 25, 2020**

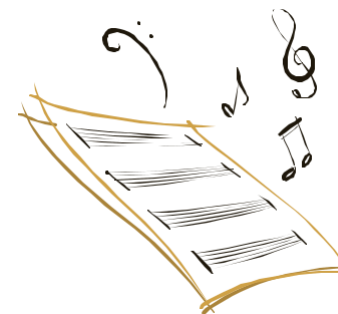
Students can perform a solo on their band/orchestra instrument as well as on piano. In addition, many students choose to participate as a member of an ensemble such as a duet, trio, or quartet. Whatever event a student chooses to prepare, a registration form must be completed and turned in to Mr. Rais with the appropriate registration fees. These items should be placed in a sealed envelope marked with the student's name and Solo and Ensemble.

Non-Piano Solo: \$10, Piano Solo: \$20, Ensemble: \$8/member (\$16 for a duet)

### Music Selection

Students should have an idea of what music they are going to perform when the registration form is turned in; however, final selections are not due until mid-December. Music needs to be classical in nature. This means NO POP music. If you are unsure whether your music is appropriate, see Mr. Rais with your music. Music must be at least a minimum of 1 1/2 min. in length.

*\*If you cannot make it to S&E for any reason, there are NO refunds for this event.*



## RULES AND REGULATIONS

Events that do not abide by the following rules and regulations will be disqualified and will not receive a rating or a medal.

1. **Time Limits-** An event will not receive a rating if the minimum time limit is not reached. Repeats or any other markings may not be added to lengthen a piece. Junior high events must be a minimum of 1 1/2 minutes (I suggest timing your piece to be a minimum of 2 minutes to allow for faster tempos the day of the performance) with a maximum of 7 minutes. Chamber ensemble events must be a minimum of 4 minutes with a maximum of 12 minutes. There is no penalty if a longer event is stopped after reaching the maximum time limit.

2. **Accompaniment-** If a written accompaniment is published for your piece, whether a solo or an ensemble, it must be played. No rating will be given if the accompaniment is not played. ALL Solos need a piano accompanist.

3. **Ensemble Parts-** All ensemble parts must be played with one to a part. For example, a trio must have three players; not two, not four. Instrument substitutions are allowed.

4. **Original Full Score-** An original full score showing all parts (accompaniment does not have to show), with each measure numbered must be provided to the judge. No rating will be given if an original, numbered score is not provided. If a score is not published, it is the responsibility of the performers to make one in which all parts are aligned. When a handwritten or computer-generated score is presented, the performers must play from original parts.

5. **Multiple Solos-** If a student enters more than one solo (maximum 2), the solos must be played on different instruments.

### ***Helpful Information (for the day of Solo and Ensemble)***

1. Sign-in at the warm-up room 30 minutes prior to your event. The warm-up room staff will escort you to the performance room.

2. Let the warm-up room staff know if you have event or accompanist conflicts so they can work around the conflict.

3. When you arrive in the performance room, you may have to wait for the previous event to exit the room. DO NOT play your instrument in the hallway. Upon entering the performance room, hand your numbered score to the room chairperson and tune to your pianist or ensemble members.

4. When the judge is ready to hear your event, the room chairman will introduce your event. This is your signal to begin.

5. Following the performance, the judge will usually make comments to you.

6. Wait in the hall outside the room for your rating. Ratings are posted after the event following you exits the room. If you receive a rating of I or II, you will receive a card that can be exchanged for a medal at the medal room.

## Frequently asked questions

### About Solo and Ensemble

**Q: Who can participate?**

**A:** All Concert, Symphonic, Jazz Band and All Orchestra members.

**Q: How do I pick music?**

**A:** Ask your private teacher, go to the music store, or ask Mr. Rais. Do not wait until the last minute to ask Mr. Rais to order you music; orders are often backlogged at festival time. Remember that you are performing for a judge and that pop tunes and movie theme songs are not appropriate. Mr. Rais must approve all pieces by December.

**Q: Who helps me get ready?**

**A:** The majority of the work is done on your own. Private teachers love to work with you on your solos. If you need additional help, make an appointment with Mr. Rais before or after school or request help at Practice sessions. The week before the festival all events must perform for the band/orchestra class. This is a mandatory part of Solo and Ensemble. Meeting with Mr. Rais will help avoid disqualification due to the misunderstanding of rules.

**Q: Do I have to have an accompanist?**

**A:** If your music calls for a piano accompaniment, you **MUST** have an accompanist. If your music calls for piano accompaniment and you perform without it, you will NOT receive a rating. Therefore, secure an accompanist early because they book up fast. As soon as you register for Solo and Ensemble (in early November), contact an accompanist to reserve a place on their schedule.

**Q: Why should I participate in Solo and Ensemble?**

**A:** Solo and Ensemble allows you the chance to refine skills on your instrument through solo literature and ensembles. At the festival an individual who is a professional on your instrument will judge you. The information this person provides will directly benefit you and your growth as a musician.

### **FOR SHEET MUSIC:**

Go and visit: Marshall Music (Allen Park and West Bloomfield), Shar Music - Strings only (Ann Arbor), Cameron Music (Livonia), Evola Music (Canton), J.W. Pepper (Online only: [www.jwpepper.com](http://www.jwpepper.com))